

OB1B

Thinking

Pat Barrett

Barrett & Assoc. Engineering
POB 19047, Portland, OR 97208 www.barrettengineering.com

OctoberBest 2008

We Will Discuss

- CAD Software
- Rapid Prototyping
- Rapid Injection Molding
- Cost Comparisons
- Gotchas - what I've learned

Barrett & Assoc. Engineering
POB 19047, Portland, OR 97208 www.barrettengineering.com

OctoberBest 2008

The Hope

- Creative - do it your way
- Fast
- Precise
- Flexible
- Inexpensive

Barrett & Assoc. Engineering
POB 19047, Portland, OR 97208 www.barrettengineering.com

OctoberBest 2008

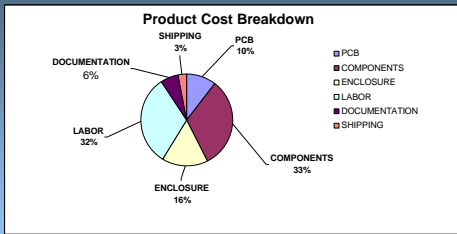
The Reality

- Yes, it's creative
- It can be fa\$t
- Precise ...or precisely wrong
- It can be inexpensive

Barrett & Assoc. Engineering
POB 19847, Portland, OR 97288 www.barrettengineering.com

OctoberBest 2008

Actual Product Costs



Barrett & Assoc. Engineering
POB 19847, Portland, OR 97288 www.barrettengineering.com

OctoberBest 2008

The Drawing

Barrett & Assoc. Engineering
POB 19847, Portland, OR 97288 www.barrettengineering.com

OctoberBest 2008

CAD Software Vendors

- Alibre \$500
- Cadvance \$800
- VersaCAD \$800
- AudoCAD \$????
- SolidWorks \$5,000

 Barrett & Assoc. Engineering
POB 19047, Portland, OR 97288 www.barrettengineering.com

OctoberBest 2008

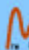
Alibre Demo

- The Software
- The PDF output

 Barrett & Assoc. Engineering
POB 19047, Portland, OR 97288 www.barrettengineering.com

OctoberBest 2008

The Prototype

 Barrett & Assoc. Engineering
POB 19047, Portland, OR 97288 www.barrettengineering.com

OctoberBest 2008

Rapid Prototyping Terms

- SLS - Selective Laser Sintering
- SLA - Stereo Lithography
- LOM - Laminated Object Manufacturing
- EBM - Electron Beam Melting
- 3DP - 3D Printing
- FDM - Fused Deposition Modeling

 Barrett & Assoc. Engineering
POB 19847, Portland, OR 97288 www.barrettengineering.com

OctoberBest 2008

More RP Terms

- Ballistic Particle Manufacturing
- Adaptive Slicing
- Directed Light Fabrication
- Additive Fabrication
- (Yadda, yadda...)

 Barrett & Assoc. Engineering
POB 19847, Portland, OR 97288 www.barrettengineering.com

OctoberBest 2008

Fused Deposition Modeling

- Stratasys™ Dimension Elite SST
 - ◆ An "Additive Fabrication Technology"
 - ◆ Uses thermoplastic (we used ABS)
 - ◆ Uses heat

 Barrett & Assoc. Engineering
POB 19847, Portland, OR 97288 www.barrettengineering.com

OctoberBest 2008

Increasing the Quantity

Barrett & Assoc. Engineering
POB 19847, Portland, OR 97288 www.barrettengineering.com

OctoberBest 2008

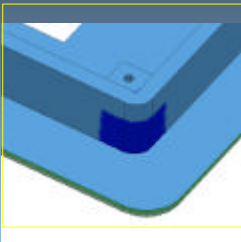
Rapid Injection Molding

- Uses aluminum tooling
Good for perhaps 10K pieces
- Cost
Midway between
Rapid Prototyping and Hard Tooling

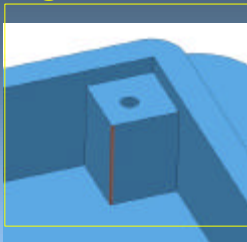
Barrett & Assoc. Engineering
POB 19847, Portland, OR 97288 www.barrettengineering.com

OctoberBest 2008

Manufacturing Issues



Excess Thickness

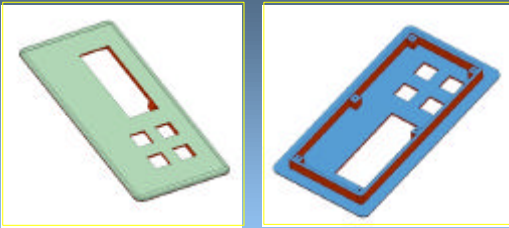


Need Radius

Barrett & Assoc. Engineering
POB 19847, Portland, OR 97288 www.barrettengineering.com

OctoberBest 2008

Issue - The Finish



Some textures will require 3-5° Draft

Barrett & Assoc. Engineering
P.O. Box 19847, Portland, OR 97288 www.barrettengineering.com

OctoberBest 2008

RIM - Cost Estimates

www.protomold.com		1	2
#Cavities		-	-
Delivery	Business days	15	15
Material	#433904000 ABS	-	-
Unit Cost	(25 to 100 pieces)	\$3	\$2
Finish - Rear			
PM-F0	Non-cosmetic	(incl below)	(incl below)
Finish - Front			
PM-F0	Non-cosmetic	\$2,650	\$4,070
PM-F1	Few toolmarks	\$2,725	\$4,220
SPI-C1	600 stone	\$3,000	\$4,770
SPI-B1	600 paper	\$3,080	\$4,935
PM-T1	Light bead blast	\$3,260	\$5,295
PM-T2	Med. Bead blast	\$3,260	\$5,295
SPI-A2	High Polish	\$3,755	\$6,285

Barrett & Assoc. Engineering
P.O. Box 19847, Portland, OR 97288 www.barrettengineering.com

OctoberBest 2008

RIM - Cost Summary

Choose 2 cavities	
So, 20K parts per mold	
Choose a med. bead blast finish	\$5,295
At \$2 per part is	\$40,000
TOTAL	<u>\$45,295</u>

This is \$2.26 per piece

*These are the low-volume prices,
extrapolated upward.

Barrett & Assoc. Engineering
P.O. Box 19847, Portland, OR 97288 www.barrettengineering.com

OctoberBest 2008

CNC Machining

Barrett & Assoc. Engineering
POB 19047, Portland, OR 97208 www.barrettengineering.com

OctoberBest 2008

Comparing CNC Machining

www.firstcut.com			
QTY	UNIT PRICE	TOTAL COST	
01	\$188	\$188	
02	\$145	\$290	
05	\$133	\$665	
10	\$128	\$1,280	
25	\$125	\$3,125	
50	\$124	\$6,200	

The Conventional Process

Barrett & Assoc. Engineering
POB 19047, Portland, OR 97208 www.barrettengineering.com

OctoberBest 2008

Bonus - Labels

- Create artwork with Illustrator, PaintShopPro, or etc.
- Save as JPG
- Upload to Costco or Snapfish
- Get a real photo!

Barrett & Assoc. Engineering
POB 19047, Portland, OR 97208 www.barrettengineering.com

OctoberBest 2008

Resources

- The Rapid Prototyping Home Page
<http://www.rapidprototypinghomepage.com>
- Rapid Prototyping Glossary of Terms
http://www.sunmantechology.com/resources_gls_rpg.html
- Wikipedia has a ton of good info

 Barrett & Assoc. Engineering
POB 19847, Portland, OR 97208 www.barrettengineering.com

OctoberBest 2008

Contacts

- www.alibre.com
- www.cadalyst.com
- www.medicaldesign.com
- www.protomold.com
- www.firstcut.com

 Barrett & Assoc. Engineering
POB 19847, Portland, OR 97208 www.barrettengineering.com

OctoberBest 2008

We Have Discussed

- CAD Software
- Rapid Prototyping
- Rapid Injection Molding
- Cost Comparisons
- Gotchas - what I've learned

 Barrett & Assoc. Engineering
POB 19847, Portland, OR 97208 www.barrettengineering.com

OctoberBest 2008

Demos and Questions



Barrett & Assoc. Engineering
POB 19047, Portland, OR 97208 www.barrettengineering.com

OctoberBest 2008

Thank You

Barrett & Assoc. Engineering
POB 19047, Portland, OR 97208 www.barrettengineering.com

OctoberBest 2008
